



Model Nordique



Outside, straight lines with Scandinavian accents. Inside, a warm and welcoming layout. That's what Nordique has to offer. The 1,376 sq. ft. of living space include a unifying kitchen with a possible walk-in pantry or a laundry room on the ground floor. Lastly, the bathroom is generously equipped with a ceramic tile shower and a freestanding tub. You'll be sold on your first visit!

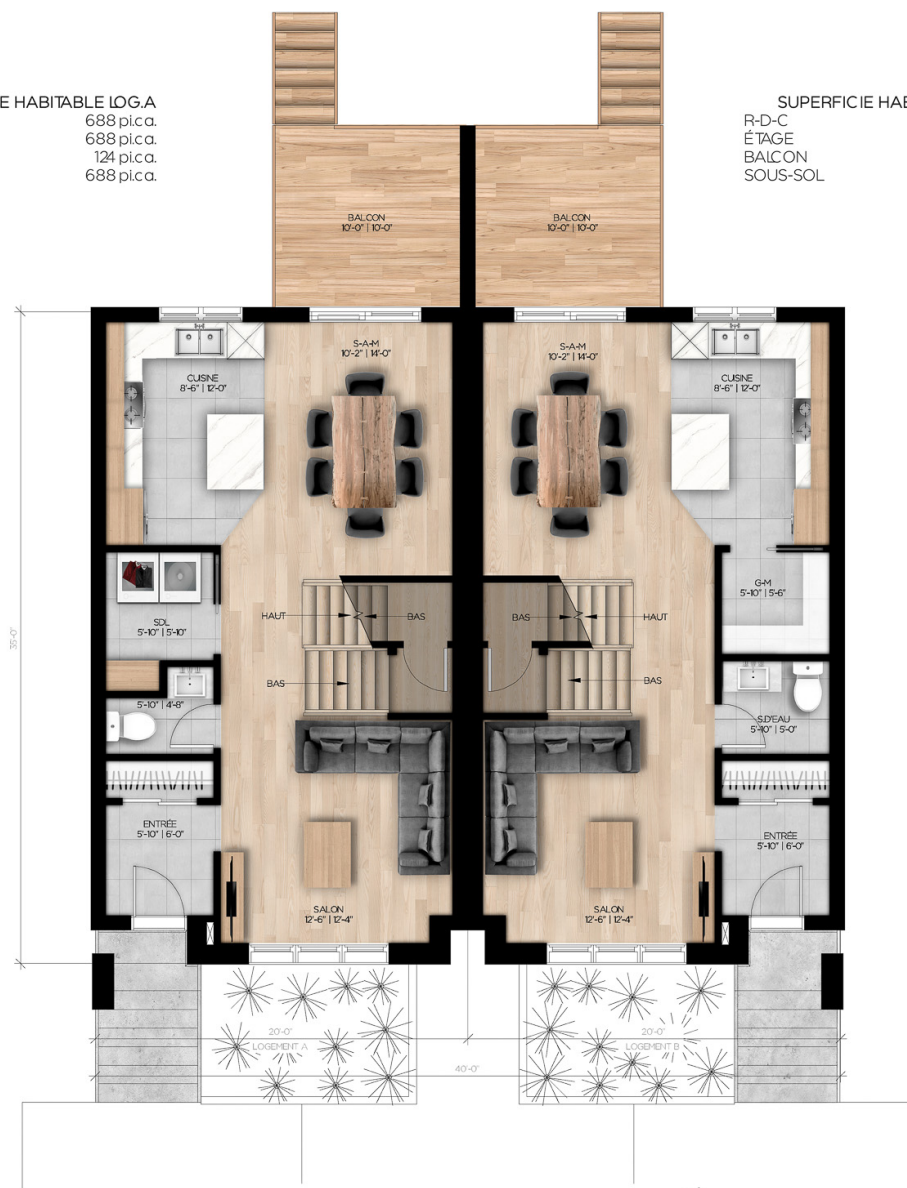
Semi-detached house • Style contemporain

2 or 3 rooms • 1 + 1 bathrooms • living room

Ground floor	688 ft ²
Second floor	688 ft ²

SUPERFICIE HABITABLE LOG.A
R-D-C 688 p.c.a.
ÉTAGE 688 p.c.a.
BALCON 124 p.c.a.
SOUS-SOL 688 p.c.a.

SUPERFICIE HABITABLE LOG.B
R-D-C 688 p.c.a.
ÉTAGE 688 p.c.a.
BALCON 124 p.c.a.
SOUS-SOL 688 p.c.a.



REZ-DE-CHAUSSÉE



ÉTAGE OPTION 2 CHAMBRES



ÉTAGE OPTION 3 CHAMBRES